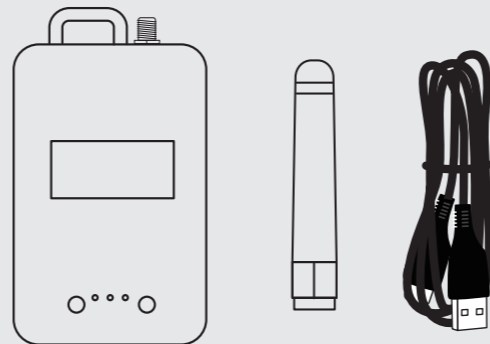


The WisMesh Board ONE Pocket is a compact, ready-to-use Meshtastic node designed for users who need easy expansion. It features pin headers for seamless access to all GPIOs and system buses. Powered by the WisBlock solution and built on the nRF52840 chip, it stands as a top performer on the Meshtastic Community Approval list.

For this device use Meshtastic firmware-rak4631-w.x.yy.zzzzzz.uf2

### Package Contents

- Board ONE Pocket x 1
- SMA Rubber LoRa Antenna x 1
- Type-C USB Cable x 1



### Need More Information?

For detailed product specifications, configuration guides, and technical support, scan the QR code on the right to access our online document center. Stay up to date with the latest resources and troubleshooting tips to get the most out of your device.

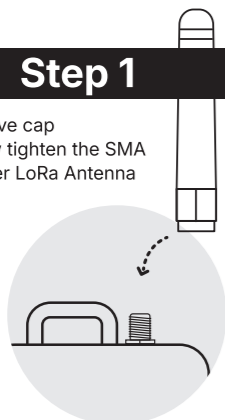


Scan for WisMesh Board ONE Pocket Documentation

## Getting Started

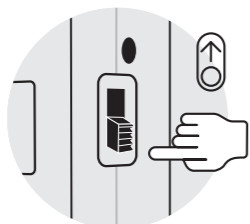
### Step 1

- Remove cap
- Screw tighten the SMA Rubber LoRa Antenna



### Step 2

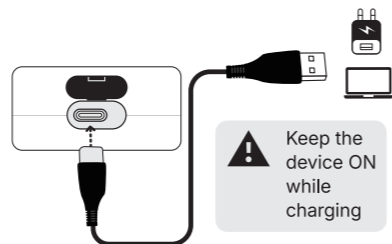
- Slide the right switch up
- Wait 5 seconds for the screen and green LED to turn on



Turn off the switch to conserve power when not in use.

### Step 3

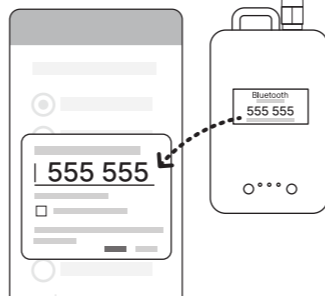
- Open the bottom cover
- Connect a Type-C cable to an adapter or a PC



Keep the device ON while charging

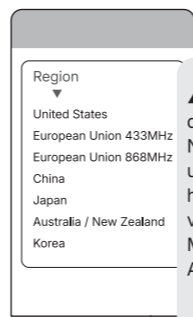
### Step 4

- Download/open Meshtastic App
- Pair with the device



### Step 5

- Select your region



The device will NOT function until the region has been set via the Meshtastic App.

### Step 6

- Unplug, close the cover, and you're ready to go!



**Button Functions**  
 - Left Button: Switch screens  
 - Right Button: Single click - Reset, Double click- DFU mode

### LED Lighting Indications

- RED:** charging
- GREEN (solid):** powered on
- GREEN (breathing):** BLE DFU mode
- GREEN (blinking):** MCU activity
- BLUE:** new message



### Welcome to WisMesh

This guide helps you set up your Meshtastic device in minutes.

Thanks for choosing WisMesh  
 - A RAKwireless Product