

RAK475/477 Use Guidance

Acquiring the Network Info of the Module

Shenzhen Rakwireless Technology Co., Ltd.

www.rakwireless.com

info@rakwireless.com

© RAK copyright. All rights reserved.

Companies and product names referred in the instruction belong to trademarks of their respective owners.

Any part of this document may not be reproduced, and may not be stored in any retrieval system, or delivered without RAK's written permission.

The document will be updated without prior notice.

1. Acquiring the Network Information of the Module

The network info of the module can be obtained in the following ways:

- a) Use the Scan Tool. Refer to “**RAK475/477 User Guide – Configuration Tool Instructions**” on how to use the Scan Tool.
- b) Send the “ipconfig” (inquire IP status) command using the serial port tool.
- c) Send the “read_config” (read user configuration) command using the serial port tool.

1. Use Scan Tool. If the module is in AP Mode, add the PC to this AP; if the module is in STA Mode, connect the PC and module to the same router, and then use the Scan Tool. Please refer to “**RAK475/477 User Guide – Configuration Tool Instructions**” on how to use it.

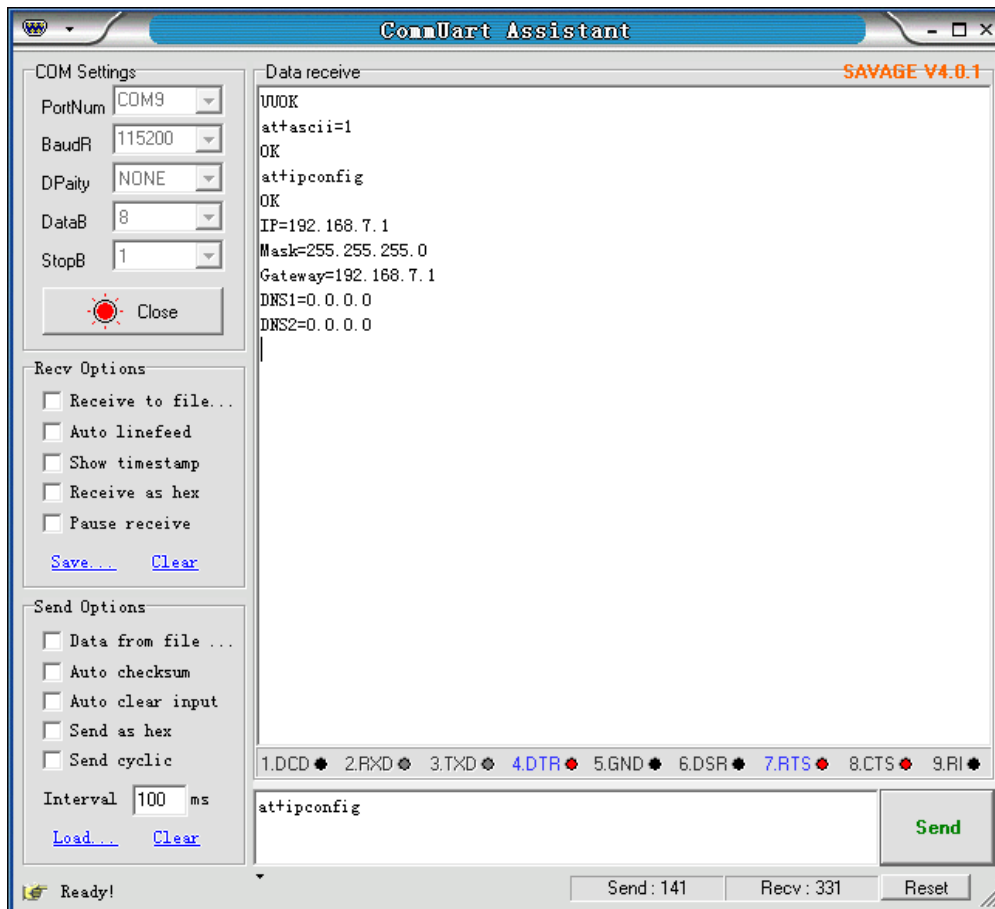
2. Send the “ipconfig” command. After the module enters Command Mode, send the “ascii” (display ASCII code) command and then send the “ipconfig” command.

Send: at+ascii=1\r\n

Return: OK

Send: at+ipconfig\r\n

Return: OK+.....



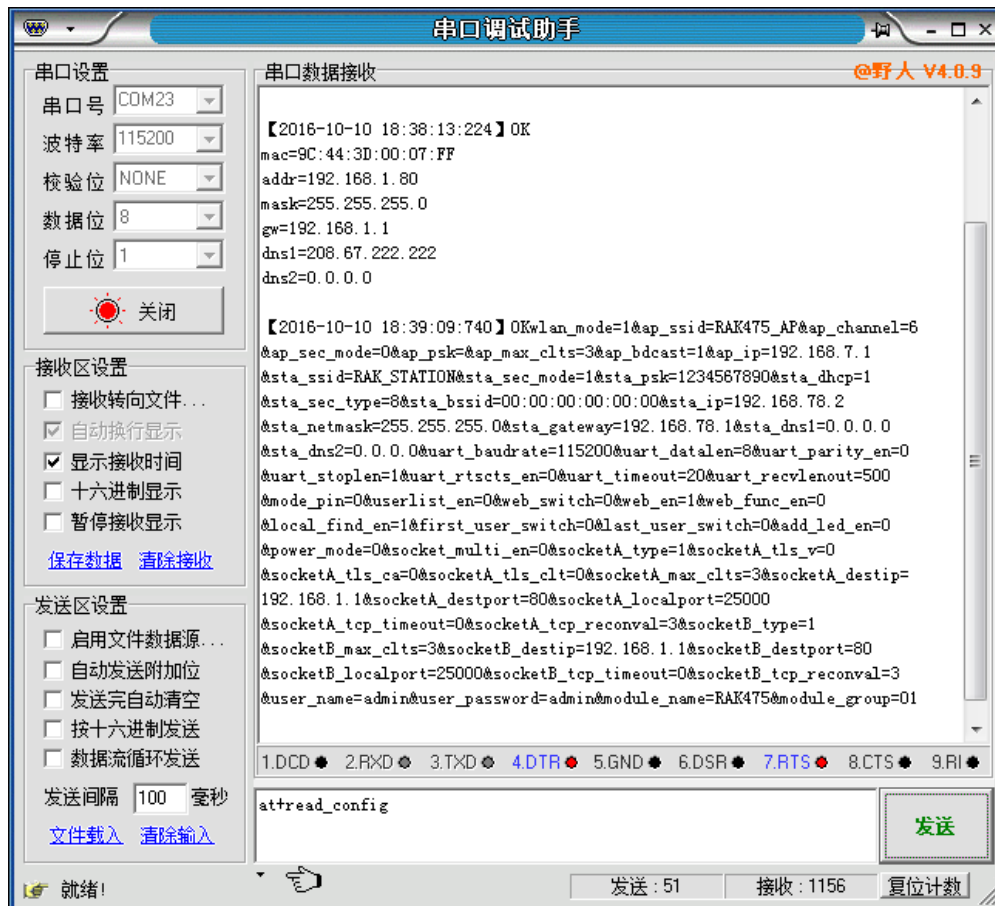
3. Send the “read_config” command. After the module enters Command Mode, first send the “ascii” (display ASCII code) command, and then send the “read_config” command to read all the user’s configuration parameters.

Send: at+ascii=1\r\n

Return: OK

Send: at+read_config\r\n

Return: OK+.....



Version

Version	Author	Date	Content modification
V1.0	Wenyong Tang	2016/10/11	Create a document