

RAK475/477 Use Guidance

How to Restore the Module to the Factory Settings

Shenzhen Rakwireless Technology Co., Ltd.

www.rakwireless.com

info@rakwireless.com

© RAK copyright. All rights reserved.

Companies and product names referred in the instruction belong to trademarks of their respective owners.

Any part of this document may not be reproduced, and may not be stored in any retrieval system, or delivered without RAK's written permission.

The document will be updated without prior notice.

1.1 Overview

This section provides two ways of restoring the module to the factory settings.

1.2 Operating Introduction

Tips:

1. This demo is done on the RAK475 development board.
2. The module in this demo is under factory settings.
3. When sending command to control the module via MCU, enter “\r\n” to complete the command;
4. When sending command to control the module via the serial port tool, press Enter to complete the command;
5. For ease of viewing, the information returned by the send command is presented in ASCII value. Special characters or Chinese characters in the returned information might result in the information being partially displayed or unreadable. In these cases, please view the returned information in hexadecimal form.

Please keep in mind the abovementioned points, for they will not be mentioned later.

1.3 Steps

1.3.1 Restoring the Module to the Factory Settings

There are two ways to restore the module to its factory settings.

Method 1:

1) Enabling Assistant Command

Enabling the assistant command interface in Transparent Transmission Mode is done in a similar way to “handshake”. As shown in Figure 1-1.

1. The host computer (master MCU) requests to enter Command Mode by sending "+".
2. Set the timer for 200ms and wait for the module to return “U” (0x55) within this specified time. If the module did not return “U” when the timer expires, send "+" again until “U” (0x55) is returned. Now the module is ready to enter Command Mode, and it is waiting for the final confirmation (wait for 3s).
3. After receiving the "U" (0x55), the host computer (master MCU) has to send a "U" (0x55) to the module as the last confirmation message within 3 seconds. If the module successfully received the confirmation message, it would return an "OK" and enter Command Mode. Otherwise, the module would exit the READY status and would be waiting for the next REQUEST command. In this case, repeat steps 1-3.

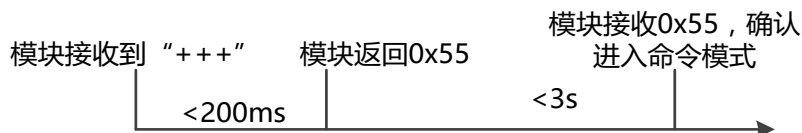
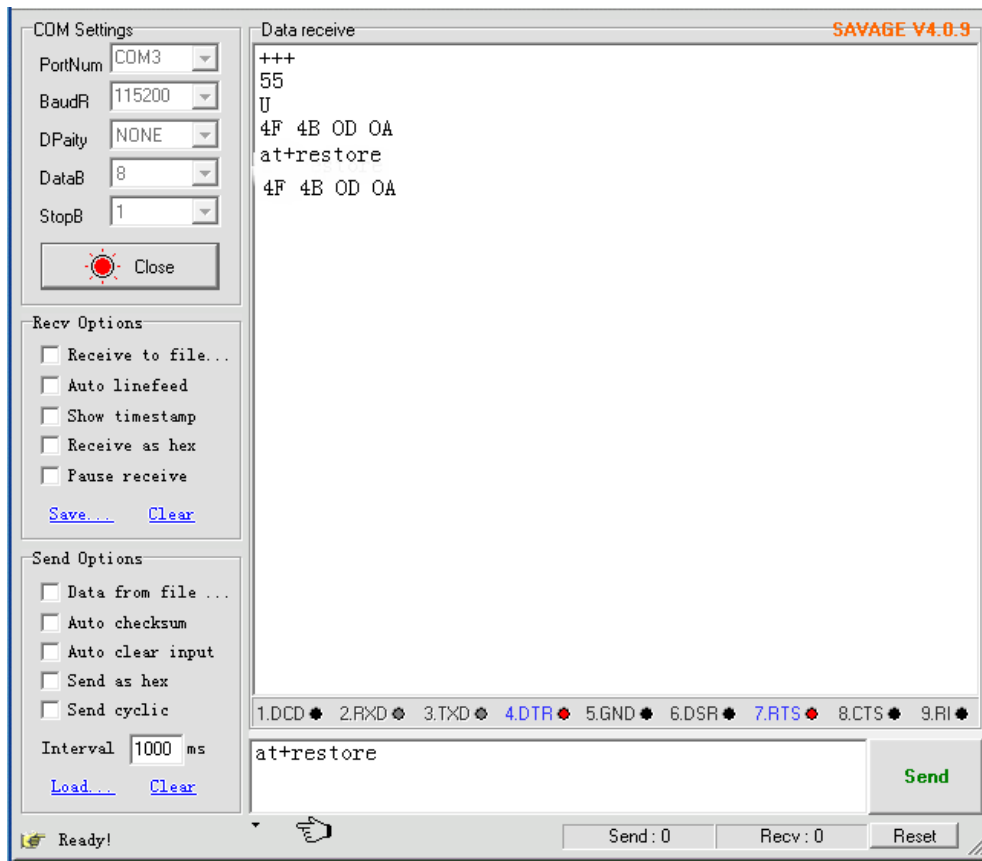


Figure 1-1 Enter Command Sequence

2) Restoring the Module to the Factory Settings

Send: at+restore\r\n

Return: OK



Method 2:

Press and hold the **Default** button on the development board until the **Link indicator** and **Status indicator** on it flash for three times simultaneously and then go off simultaneously. Let go of the button, and the **Status indicator** light would turn solid and the **Link indicator** would flash slowly, which means the module has been restored to the factory settings.

Version

Version	Author	Date	Content modification
V1.0	RAK	2016/11/24	Create a document