



Connecting WisBlock with Cellular from Blues

Blues.ONE

Build your WisBlock solution with combined cellular and LoRa®/LoRaWAN® connectivity

Blues.ONE is a modular device built with WisBlock modules. It combines a cellular modem for LTE-M, NB-IoT and GSM networks with a WisBlock Core module that provides LoRa®, LoRaWAN® and BLE connectivity. The cellular modem has in addition a GNSS location tracking capability.

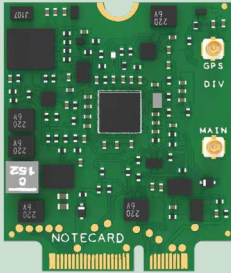


- Nordic nRF52840 MCU Semtech SX1262 LoRa® transceiver
- Blues.IO Notecard
- Optional Unify Enclosure IP65
- 5-pin IP65 M8 connector for power supply
- Internal LoRa® & BLE antenna
- External LTE antenna

Order Now!



Design your device with the flexibility of WisBlock Modules



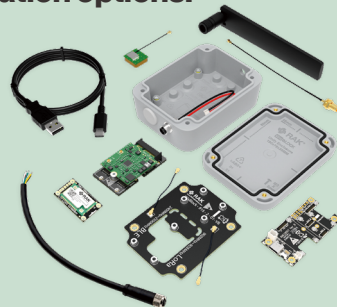
Global Cat-M, & Cat-NB and GSM communication functionality.

Select between cellular and LoRaWAN® communication.

Affordable cellular connection cost with the Blues.IO Notecard with worldwide coverage.

Choose from different configuration options:

As a bare kit to fit into your own choice of enclosure.



As a kit with IP65 enclosure and optional with backup battery

Extended the Blues.ONE with a wide selection of WisBlock Sensors to build the device you need for your application.



Write your own application for the Blues.ONE with the power of Open Source.

Blues.ONE is supported by **RAKwireless BSPs** which let you create low power applications with **LoRa®/LoRaWAN®** connectivity with ease.

Alternatively, you can choose the **Arduino RUI3 BSP**.

Use our example codes to setup your cellular connectivity easily



Basic Sensor Example



LoRa® P2P to cloud gateway



LoRaWAN® / Cellular connected Location Tracker

A portable cellular device with a free 500 MB data plan and LoRa®/LoRaWAN® as fallback connectivity



Blues.IO Notecards come with worldwide coverage for LTE-M, NB-IoT and GSM networks



Contact Us



 inquiry@rakwireless.com

Follow Us



Discover More

