



WisGate

Connecting nodes to the cloud

Gateways with LoRaWAN[®] for any scenario.

Versatile commercial-grade gateways to work either indoor or outdoor.

Customizable in terms of the backhaul connectivity options, antenna type, and power provisioning.



For Enterprise Grade, commercial deployment for both indoor and outdoor



WisGate Edge Lite 2

RAK7268

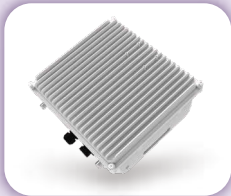
RAK7268 is a full 8-channel indoor gateway, based on the LoRaWAN® protocol, with built-in Ethernet connectivity for a straightforward setup. Additionally, there is an onboard Wi-Fi setup (supporting 2.4 GHz Wi-Fi) that allows it to be easily configured via the default Wi-Fi AP mode. It supports LTE connection (optional) and can be powered with PoE for easy deployment.



WisGate Edge Pro

RAK7289

RAK7289 is an ideal product for IoT commercial deployment. With its industrial-grade components, it achieves a high standard of reliability. The gateway provides for a solid out-of-the-box experience for quick deployment. With the RAK Battery Plus the gateway is perfect for deployments on and off grid.



WisGate Edge Ultra

RAK7285

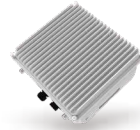
RAK7285 is designed for high-density deployments. It offers 8 full-duplex LoRa channels, multi-backhaul support (Ethernet, Wi-Fi, Cellular), and advanced diplexers for interference suppression and built-in lightning protection. Powered by WisGateOS 2 with WisDM integration, it delivers unmatched reliability, scalability, and seamless remote management for smart cities and large-scale IoT applications.



WisGate Edge Prime

RAK7240

RAK7240 is ideal for large-scale LPWAN deployment where cost is essential, however, there are no compromises to be made on quality. It is based on the SX1303 LoRa core. It is suited for any use case scenario, be it rapid deployment or customization with a custom brand.



WisGate Edge Lite 2
RAK7268 version 2

WisGate Edge Pro
RAK7289 version 2

WisGate Edge Ultra
RAK7285

WisGate Edge Prime
RAK7240 version 2

Type	Indoor	Outdoor	Outdoor	Outdoor
Hardware Platform	RAK636	RAK636	RAK636	RAK636
Software Platform	WisGateOS 2 based on OpenWRT	WisGateOS 2 based on OpenWRT	WisGateOS 2 based on OpenWRT	WisGateOS 2 based on OpenWRT
WebUI	✓	✓	✓	✓
Wi-Fi for Configuration	✓	✓	✓	✓
Ethernet	✓	✓	✓	✓
Cellular Option	✓	✓	✓	✓
GPS	✗	✓	✓	✓
PoE	✓	✓	✓	✓
Console Port	USB Type-C serial	USB Type-C serial	USB Type-C serial	USB Type-C serial
Power Options	12 V DC PoE (IEEE 802.3 af)	PoE (IEEE 802.3af) Battery Plus 12 V DC	PoE (IEEE 802.3at) Battery Plus 9-36 V DC	PoE (IEEE 802.3af) Optional 9-24 V DC Battery Plus
LoRa® Core	SX1302 mini PCIe	SX1303 mini PCIe	SX1303 mini PCIe	SX1303 mini PCIe
Channel Support	8	8 or 16	8 or 16	8 or 16
LoRa® RX Sensitivity	-139 dBm (Min)	-139 dBm (Min)	-139 dBm (Min)	-139dBm (Min)
LoRa® TX Power	27 dBm (Max)	27 dBm (Max)	27 dBm (Max)	27dBm (Max)
Antenna Connector/s	RP-SMA female	N-type	N-type	N-type
Ingress Protection	IP30	IP67	IP65	IP65
Enclosure Material	Plastic	Aluminum and Plastic	Aluminum	Aluminum
Dying Gasp	✗	✓	✓ (optional)	✗
Dimension	166 x 127 x 36 mm	240 x 240 x 80 mm	310 x 290 x 146 mm	224 x 121 x 42 mm
Operating Temperature	-10°C to 55°C	-30°C to 55°C	-30°C to 55°C	-30°C to 55 °C
Installation Method	Wall mounting; Rail	Pole or Wall mounting	Pole or Wall mounting	Pole or Wall mounting

Personalize Your Gateway!

RAKwireless provides services for custom branding for the WisGate Edge series. For enterprise customers, we are able to provide custom logos, stickers, and prints on the gateway enclosures, packaging, and labels.

WisGateOS 2 and the custom logo extension give the ability to put your own logo on the gateway WebUI too.



For Soho, small open area installation with cost effective solution



WisGate Soho Pro RAK7267

RAK7267 features 8 LoRa channels, built-in antennas, and an IP67-rated enclosure for enhanced weather resistance. With flexible power options, solar compatibility, and included mounting accessories, it ensures effortless installation and robust performance for outdoor IoT deployments in any environment.



Ease of Installation

Setting up the WisGate Soho Pro is straightforward and requires just a single power cable for connection to external solar or DC power supplies. It comes with built-in antennas for LoRa, LTE, Wi-Fi, and GPS. Its all-in-one, compact design enhances weather resistance and simplifies installation.

Whether you are mounting it on a vertical or horizontal pole, everything you need comes included in the box.

It also works with a wide range of tailor made IoT focused mounting accessories, making it adaptable to all manner of mounting challenges and more.

Vertical Pole Mount (Type A)



Pole Mount

Horizontal Pole Mount (Type B)



Wall Mount

Horizontal Pole Mount (Type C)



Magnet

DIN Rail



Belt Loop



Belt Clip



Hook Loop



Label



The WisGate Soho Pro gateway RAK7267 is ideal for various low-density applications, including smart agriculture, smart cities, industrial IoT, and remote monitoring solutions, where robust and reliable connectivity is essential.

Flexible Power Options



Compatible with RAK Solar Battery Kit, the WisGate Soho Pro supports sustainable energy solutions and can operate efficiently in remote locations without traditional power sources. It supports DC 9-36 V power input.

- Solar Battery
- Custom DC Power

Specifications

Feature	Specifications
Computing	MT7628, DDR2 RAM 128 MB
Frequency	EU868/IN865/RU864/US915/AU915/KR920/AS923
LoRa Feature	<ul style="list-style-type: none"> • SX1303 On Board • RX Sensitivity: -139 dBm (Min) • Listen Before Talk • 8 Channels • TX Power: 27 dBm (Max)
Cellular Feature	Quectel EG915U-EU/EG915U-LA/EG915Q-NA (IoT/M2M -LTE Cat 1 Module)
Wi-Fi Feature	<ul style="list-style-type: none"> • Frequency: 2.4 GHz (802.11b/g/n) • RX Sensitivity: -95 dBm (Min) • 2x2 MIMO • TX Power: 20 dBm (Max)
Power Supply	9-36 V DC Compatible with RAK Solar Battery Kit
Antenna	LoRa/LTE/Wi-Fi/GPS: All Internal Antennas
LoRa Antenna	2.5 dBi gain, >85% efficiency, ensures robust and reliable connectivity even in challenging environments
Ingress Protection	IP67
Dimension	180 mm x 130 mm x 60 mm
Enclosure Material	UV stabilized ABS
Operating Temp.	-30°C to 55°C
Operating Humidity	0-95 % RH Non-Condensing
Installation Method	Pole Mount, Wall Mount, DIN Rail, Hook, and More

Featuring Cat-1 LTE, the WisGate Soho Pro offers reliable, cost-efficient connectivity options, eliminating the need for ethernet backhaul and simplifying deployment in areas where ethernet is not viable.

For Edge Computing and Mega Capacity scenario



WisGate X Industrial RAK7437

RAK7437 easily connects LoRaWAN devices to BACnet BMS. Featuring WisGateOS 2, a user-friendly GUI, flexible Wi-Fi and cellular connectivity, and a durable IP30 aluminum enclosure, it streamlines integration and reduces deployment complexity.

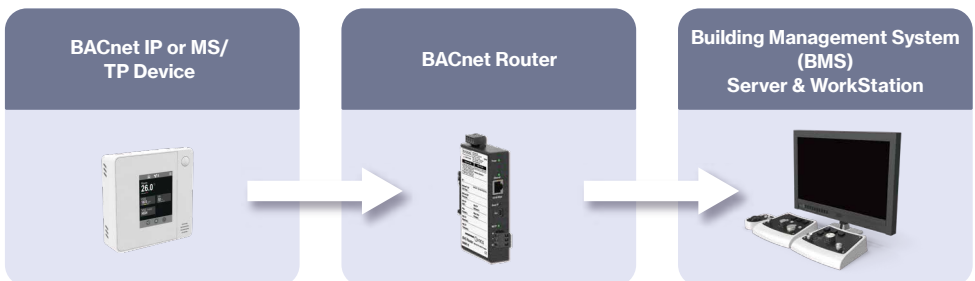
Streamline Your BMS with LoRaWAN® Integration

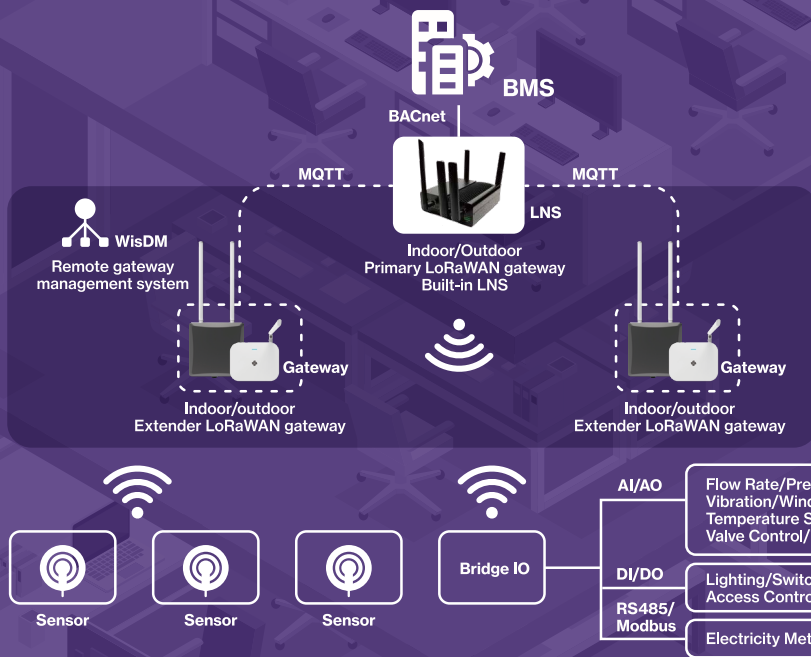
LoRaWAN® to BACnet Gateway

- Integrates LoRaWAN® devices into your BMS.
- Bridges the gap between wireless LoRaWAN® and wired BACnet networks.
- Reduces deployment complexity and costs.



Traditional BACnet Deployment



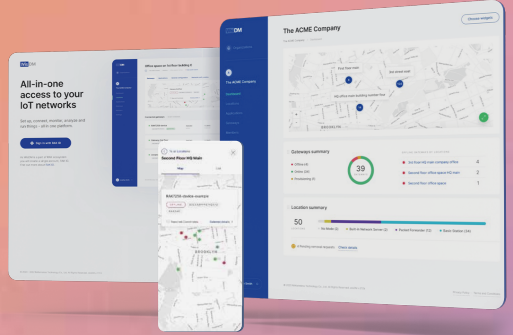
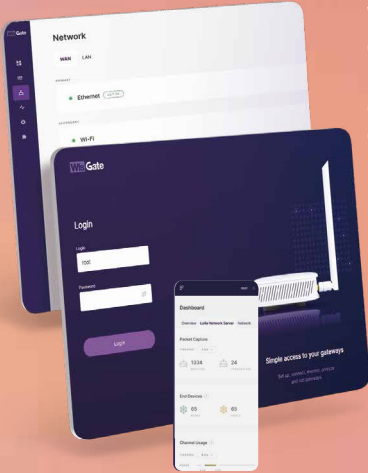


Specifications

Feature	Specifications
Computing	IPQ5018 Dual cores A53 @ 1 GHZ, DDR3 RAM 1 GB
Wi-Fi Feature	Frequency: 2.4 GHz (802.11b/g/n/ac/ax) 2x2 MIMO RX Sensitivity: -95 dBm (Min) TX Power: 20 dBm (Max) Operation channels: 2.4 GHz: 1-13
LoRa® Feature	<ul style="list-style-type: none"> • SX1303 mPCIe card • RX Sensitivity: -139 dBm (Min) • Listen Before Talk • 8 Channels • TX Power: 27 dBm (Max)
Frequency	EU868/IN865/RU864/US915/AU915/KR920/AS923/EU433/CN470
Cellular Feature (Available with RAK7437C)	Quectel EG95-E/EG95-NA/EC25-E/EC25-AU/EC25-J (IoT/M2Moptimized LTE Cat 4 Module)
Power Supply	PoE (IEEE 802.3at) 42-57 V DC; DC 9-36 V
ETH	1 WAN RJ45 (10/100/1000 M)+4 LAN RJ45 (10/100/1000 M)
SFP	1 x 10/100/1000 M
Antenna	LoRa: 1 RP-SMA connector LTE: 2 SMA connectors 2.4G Wi-Fi: 2 SMA connectors
Ingress Protection	IP30
Enclosure Material	Aluminum
Operating Temperature	-20°C to 55°C
Operating Humidity	0 to 95% RH non-condensing
Installation Method	Desk or wall mounting

Advanced Operating System

WisGateOS 2 is the latest version for WisGate gateways. It is based on the latest OpenWrt kernel, and provides enhanced security, customizable extensions, and remote management capabilities via WisDM, a cloud-based platform for fleet management.



WisGate OS 2

WisDM



Extended Accessory Interactions

WisGateOS 2 features more versatility to your deployment via accessory management and monitoring like the integration of WisGate gateways and Battery Plus. WisGateOS 2 shows the status, charge level, and statistics for the Battery Plus. The information will be available in the WisDM too.



Contact Us

✉ inquiry@rakwireless.com

Discover More



Follow Us

